

Manufactured For Better Cost Performance

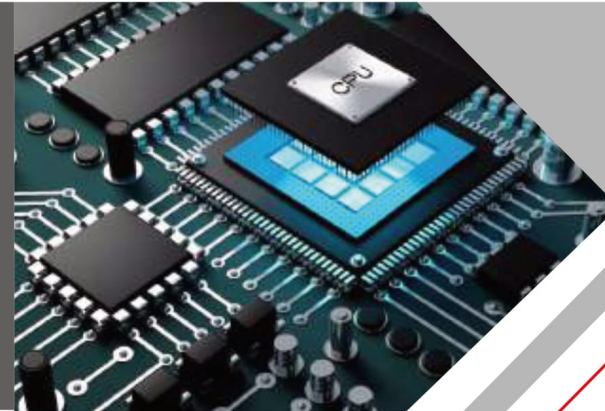


✉ Email: sales@faroads.com

📱 Mobile/what's APP/WeChat: +86-18587477426

🌐 Web : www.faroads.com

Faroad Scenc Park 52 Huangpu road Shajing town
Baoan district shenzhen



SMT EQUIPMENT SOLUTION



SHEN ZHEN · SINGAPORE · HONG KONG · SU ZHOU



WWW.FAROADSMT.COM

Contents Directory

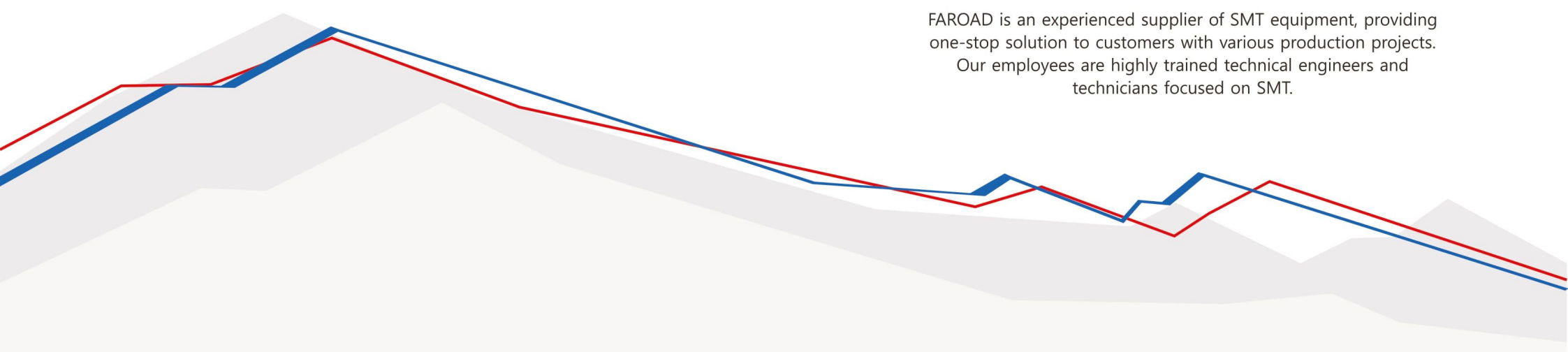
| | |
|-------------------------------|-------|
| Business Background | 04/07 |
| Company Profile | 08/09 |
| Enterprise Culture | 10/11 |
| The Whole Line | 12/15 |
| The Product Field | 16/17 |
| Pick and Place Machine | 18/23 |
| Reflow Oven | 24/29 |
| Automatic Printer | 30/31 |
| Solder Paste Printer | 32/33 |
| Loader And Unloader | 34/35 |
| Buffer Conveyor | 00/36 |
| Workshop Display | 37/39 |



BUSINESS BACKGROUND



FAROAD is an experienced supplier of SMT equipment, providing one-stop solution to customers with various production projects. Our employees are highly trained technical engineers and technicians focused on SMT.



TIME LINE

COMING TOGETHER IS A BEGINNING
KEEPING TOGETHER IS PROGRESS
WORKING TOGETHER IS SUCCESS

SET UP

The Corporation of FAROAD Intelligent Equipment was established in 2006. Mainly engaged in the import / export trading of high-precision placements and the peripherals.

2006



AWARDS

Won a number of Independent Research and Development Patents
Won the High-Tech Enterprise Award and Most Outstanding Enterprise Award.

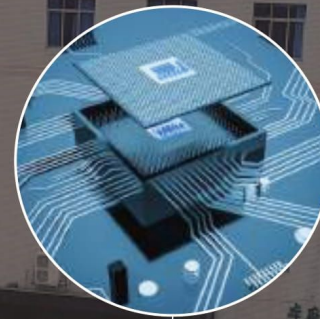
2009~2011



2006~2009

ACHIEVEMENT

FAROAD was awarded the National High-Tech Enterprise and became the pioneer in SMT Industry.



2012~2017

BREAKTHROUGH

Established the Silicon Valley Research Institute
Began to develop SMT machines independently
Developed the international market and products were sold internationally.



NEW JOURNEY

September 2018
Established FAROAD Suzhou with registered capital of RMB110 million and with total area of 24,000 square meter
Started developing High-End Moulder machine

March 2019
Established FAROAD Singapore office at Oxley Bizhub Singapore

2018~2019



COMPANY PROFILE

The Corporation of FAROAD Intelligent Equipment was established in 2006, which is mainly engaging in the import and export trade of High-precision placements and peripherals.

FAROAD has the capability of both Self-Research (R&D) and Manufacturing. We obtain a series of Inventions and Utility Patents under the Honor of National High-Tech Enterprise.

The primary Pick & Place machines of FAROAD are CPM-II, CPM-III, CPM-III and CPM-Tse. The peripherals includes the Loader, Unloader, Full/ Semi-Auto Solder Paste Printer, Buffer Conveyor, Reflow Oven, etc.

Moreover, the turnover of FAROAD reached approximately 500 million Yuan per year with the majority of customers in Asia, Africa and Europe regions.

The goal of FAROAD is to become the largest supplier for SMT Devices during the next 5 years and run the 4S operation concepts throughout the entire company. 4S means, a Reasonable Scientific Sales, a Superior Supply for the Original Accessories, a High-Efficiency After-Sales Service, and an Effective-Accuracy Survey.

The Corporation of FAROAD employs nearly 200 employees, whom 87 are highly competitive maintenance engineers for the pick and place machine and another 37 engineers responsible in developing the domestic pick and place machine.

Furthermore, in 2017, we setup an academy on the Silicon Valley where the staffs are currently striving to march towards the Industry 4.0 to achieve the goal, Made In China 2025.

**FAROAD** 路远

深圳市路远自动化设备有限公司
深圳市路远智能装备有限公司

GLOBAL PRESENCE AND SERVICES

- SCIENTIFIC SALES
- ORIGINAL QUALITY PARTS SUPPLY
- HIGH-EFFICIENCY AFTER-SALES SERVICE
- EFFECTIVE-ACCURACY FEEDBACK



OUR ADVANTAGES

- 01 10+ years industry leader
- 02 One-stop sales platform
- 03 Multi-channel spare parts supply
- 04 High-Tech Enterprise
- 05 Efficient and Active After-Sales Team
- 06 Senior Overseas Engineers
- 07 ISO 14000 certified
- 08 Fast and Efficient Technical Support



Our products are sold all over the world

CUSTOMERS DISPLAY



FULL LINE SOLUTION

• For the one-stop SMT solution, customers only need one reliable contact to handle their installation and after service, more efficient and more cost-saving. Professional and reliable SMT solution is able to meet your various SMT productions and PCBA requirements. One-stop solution ensures one-stop service with high efficiency.

LINE CAPACITY: 20000CPH

SMT WHOLE LINE PRESENTATION



1. Standard SMT Line for Small Production

• This SMT line is mainly consisted of semi-auto solder paste printer, multi-function pick and place machine and six zones reflow oven, which is suitable for the beginner company and small production site.

• We will offer you a cost-effective full/semi auto SMT assembly line solutions for start up SMT factory. Suitable for LED light, LED strip, consumer products like mouse, Keyboard and other home electronic products production.

LINE CAPACITY:55000CPH

SMT WHOLE LINE PRESENTATION



2.Middle volume SMT Production Line

• The middle volume production is supported by the full-automated SMT line. In this line, we offer the double-sides pick and place machine with more feeder capacity. Besides, full-auto printer and 8 zones reflow oven also guarantee the higher production volume.

• The SMT line consists of specially selected equipment, including a solder paste printer, at least one SMT machine, a reflow soldering oven and advanced AOI inspection equipment. Together, these machines allow us to install up to 20,000 chips per hour with extremely high precision.

LINE CAPACITY:85000CPH

SMT WHOLE LINE PRESENTATION



3.High-volume SMT Production Line

• High speed SMT assembly line with one CPM-F2 and one CPM-H2, the production speed can reach to 45000 CPH, it is fast for LED light production as well as various household appliances. High speed SMT line also can improve production turn around times while increasing accuracy and offering more flexible solutions.

• The SMT line is fully automatic, boards are carried by conveyor through the entire assembly process. Multi-functional pick & place machine combined with high speed placement equipment is capable of placing 50,000 components per hour! The full screen printer ensures the automatic and stable printing. The 8-stage reflow oven, with upper and lower heating zones, assures an optimal solder connection.

PRODUCT APPLICATION FIELD

Home appliance⁺ industry



Pick and Place machine plays a vital role in the manufacturing of consumer electronics or home electronics intended for everyday use, including TVs, DVD players, video games, remote control cars, washing machines, etc.



Automotive electronics are electronic systems used in vehicles, including engine management, radio, telematics, in-car entertainment systems and others, also including transmission electronics.



LED lighting products including tube lights, LED panels, strip lights, and various street light with the feature of energy saving and cost-effective have been accepted by the market. Faroad LED assembly pick and place machine will help you to get the position in this increasing industry.



Intelligent home is applied to intelligent home control system, including intelligent home appliances control, intelligent lighting control, electric curtain control, burglar alarm, access control, gas leakage, etc., at the same time can also expand such as three table cc, video vod and other value-added services.

PICK AND PLACE MACHINE

PRODUCT DISPLAY



PRODUCT FEATURES

- Equipped with Japanese Sanyo linear motor owning higher accuracy and lower abrasion.
- Advanced Germany industrial linear scanning camera can achieve high-precision recognition of the component without mistiming and stopping.
- High accuracy thermal compensation system can monitor the placement precision in real time and modify the placement automatically.
- Nozzles exchanged automatically ensures various components can be compatible.
- Using electric feeder ensures the higher accuracy of feeding process, solving the component dumping caused by unstable situation.
- Fast switching between Chinese and English interface is more suitable for the international market.
- Self-developed high end vibratory feeding system with 8 feeding channels. (CPM-F2T)
- Applicable to other PCB components not only in Lens. (CPM-F2T)



Multi-functional
pick and place machine

High Speed
pick and place machine

Lens
pick and place machine

Faroad insists in using the high-end brand hardware to continuously provide the stable & reliable performance for our end users.

| Part | Country | Brand |
|-----------------------|---------|-----------|
| X/Y Axis Linear Motor | Japan | Sanyo |
| X/Y Axis Rail Guider | Japan | THK |
| Grating Ruler/Encoder | UK | Renishaw |
| Linear Camera | Germany | Basler |
| Pneumatic Part | Japan | SMC |
| Electric Part | Germany | Schneider |
| Z Axis Component | Japan | IKO |

SOFTWARE FEATURES

Provides an easy to use graphical user interface and efficient programming functions to manage high volume and complex production.



1. User-friendly, intuitive, easy-to-learn software design.
2. Off-line programming capability for setting up new SMT assembly programs or modifying existing SMT assembly programs.



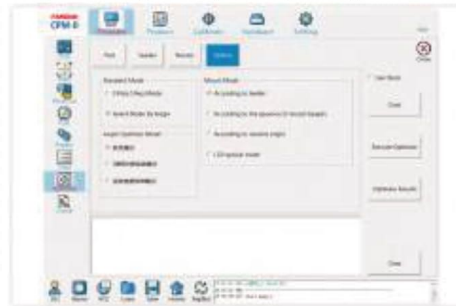
5. Able to support automatic nozzle change for increasing the efficiency.
6. Provides high-quality programming functions to reduce total programming time with system part library.



- 9.1 Automatic component measurement: the data of various type components can be programmed easily by the operator via just inputting approximate dimension, type and packaging information.
- 9.2 Components automatic teaching function: Various common components like BGAs and QFPs can be taught automatically by machine software in an easy and fast way.



3. Software can work on different MS Windows environment, such as win. 7 and win.10.
4. Simple calibration system is easy for the beginner to operate.



7. Different optimization methods ensure to achieve mass and complex production.
8. Specific software design for LED chips mounting.



- 9.3 Perspicuous component data program guideline ensures that beginners also can make the data for the odd-shape components easily via step-by-step instruction in the guideline.
- 9.4 MES (Manufacturing Execution Software) provides comprehensive capabilities for tracing electronic manufacturing process, including production schedule and statistics, machine status, as well as quality traceability.

HARDWARE FEATURES

Faroad insists in using the high-end brand hardware part to continuously provide the stable & reliable performance for our end users.



1. Strong and Flexible feeder Capability

- Double feeder bases are optional for Faroad Pick & Place Machine total can equipped with 84 slots (8mm feeder) to meet a wide variety of components production.
- Supporting the use of tray plate and vibration feeder.
- Automatic IC box with 20-pieces tray plate capability.



2. High-quality Visual System

- Professional linear scanning camera from Germany brand Basler, it is shock-resistance and guarantees high-quality component recognition.
- The Ring-shaped light source is made by OSRAM lamp beads that has highlight and high-stability, and lighting comes from its base and 8 sides.



3. High-precision Movement System

- IKO guide rail ensures the up-down of Z-axis in high-speed, high-accuracy, and high stability.
- High-precision IKO ball spline ensures the high-accuracy of R-axis rotation.
- THK guide rail on both X and Y axis realizes the high-precision, high-rigidity, energy-saving, high-speed machines with long service lives.



4. Reliable Machine Movement Control System:

- Independent drive panel for each Z axis movement, which offers long-life usage and easier maintenance for the machine.
- Japanese Sanyo linear motor used on X/Y axis is exclusively used in Pick & Place machine, ensuring the high machine performance.
- Renishaw grating ruler on both X-axis and Y axis enhances high-precision position feedback and provides class-leading accuracy with low jitter, excellent signal stability



5. Conveyor system

- Top and bottom and side on plywood method which is very flexible and can be adjusted side to side to avoid the components at the board edge, ensuring the accuracy and stability.
- Conveyor extension is available, the machine can support 1.2 M board.

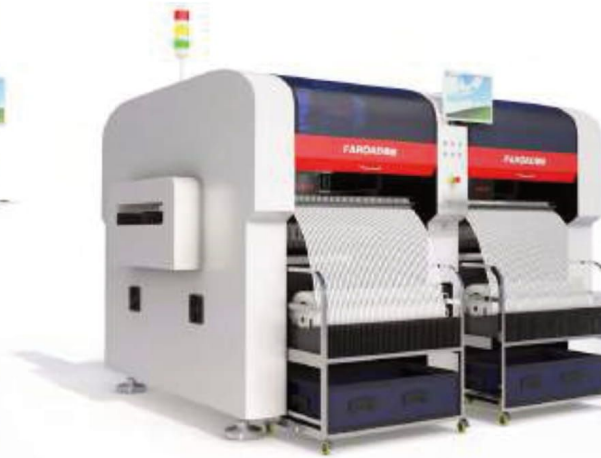


6. High-Precision Calibration System

- The high-accuracy calibration on the placement head, combined with the machine software, which is able to provide excellent but simple calibration process.

PRODUCT PARAMETERS

- We can provide full line SMT products and SMT peripheral equipment , we strive to be customer-oriented to achieve the lowest budget, the highest production efficiency of the full line .



| Model | CPM-F2 Multi-Functional Pick and Place Machine | CPM-H2 High Speed Pick and Place Machine | CPM-F2T Lens Pick and Place Machine |
|----------------------------|---|--|--|
| Parameter | | | |
| Placement speed | 28000CPH* ¹ | 50000CPH* ¹ | 20000CPH* ¹ |
| Placement accuracy | ±0.05mm | | |
| Lens size | | | 5~30mm |
| Board size | min 50mm x50mm max 410mm x1200mm (option) | minmum 50mm x50mm maximum 410mm x450mm | minmum 50mm x50mm maximum1200mm x410mm |
| Board thickness | 0.4~5.0mm | | |
| Board weight | Max 4KG | | |
| PCB transmission mechanism | Three phases | | |
| Component type | 42categories(maximum/converted to 8mm volume) | 76 categories(maximum/converted to 8mm volume) | |
| Spindle quantity | 8 | 16 | 8 |
| Feeder capacity | 42 slots one side, 84 slots two sides (option) | 76 slots one side, 152 slots two sides | Bow Feeder(8Lanes)+16 slots/58 slots |
| Feeder specification | 8mm~56mm | | |
| Applicable component | From the tiny chip of 0201 to the large component of 40mm with various of resistors and capacitors,LC ,BGA etc. | | |
| Power | AC 380 / 420 /480V / | | |
| Air source | 0.5~0.8Mpa | | |
| Control system | Windows 7 control platform of the Chinese and English interface | | |
| Machine size | L1380mm x W1800mm x H1550mm | L2850mm x W1880mm x H1450mm | L1980mm x W2350mm x H1550mm |
| Weight | 1850KG | 2890KG | 2050KG |
| Alignment | Scanning for centering | | |
| Clamp Way | Side-on,top and bottom | | |

REFLOW OVEN



PRODUCT DISPLAY



SIX-ZONES
reflow oven

EIGHT-ZONES
reflow oven

TEN-ZONES
reflow oven

PRODUCT FEATURES

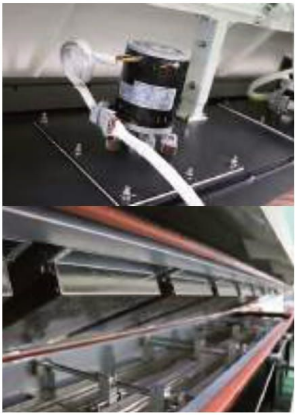
- Unbeatable price-performance ratio
- Inline integration with matching interfaces
- Good performance with the less production cost
- Low costs of ownership with high process reliability
- Compact machine technology for small and medium-sized production plan
- Heating zones with full hot air convection, ensuring perfect soldering results
- Flux management system at both ends of the oven ensures minimum maintenance requirements

Faroad insists in using the high-end brand hardware to continuously provide the stable & reliable performance for our end users.

| Part | Country | Brand |
|------------------------|---------------|---------------|
| PLC | Germany | SIEMENS |
| Frequency converter | Germany | SCHNEIDER |
| Solid-state relay | Switzerland | CARLO GAVAZZI |
| Switching power supply | Taiwan, China | MEAN WELL |
| Brake staff | Germany | SIBRE |
| Blower Motor | USA | A. O. SMITH |

HARDWARE FEATURES

- Board drop detection
- Uninterruptible power supply
- Guaranteed Lead Free process
- Automatic edge rail lubrication system
- 320°C high temperature processing capabilities
- Combination pin chain and mesh belt conveyors (Standard)
- Light tower
- Board counter
- Motorized width adjust
- Smema communication
- Comprehensive warranty
- Windows 7 Operation interface



1.Excellent thermal convection system

- 1.1 Efficient power design and heat management system greatly improves energy savings while lowering carbon emissions.
- 1.2 150W high quality hot air motor, large wind wheel and high-efficiency heating pipe, which is easy to maintain and can reduce power consumption.
- 1.3 SUS304 nozzle plate is anti-corrosion and easy to maintain, also it allows to cover the boards independent of component size or color with hot air in all direction for good uniformity.
- 1.4 320 °C high temperature processing capabilities, allowing the heating zone temperature controllers have an accuracy of ± 1 °C, also ensuring a ΔT of ± 1 °C across the PCB assembly.

2.Reliable conveyor system

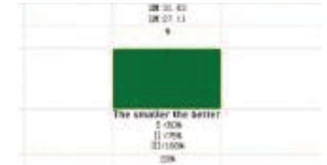
- 2.1 The guide rail is made from special aluminium alloy whose surface was treated by oxidation and has the super hard film, which is hard to be deformed and corroded.
- 2.2 The guide rail adapts two-phases design, which increases the bending strength and deformation-resistance ability.
- 2.3 Special width adjustment and transmission structure design ensure the reliable PCB transmission.
- 2.4 Both hand and electric width adjustment, also emergent hand transmission control is available which can avoid that the PCB is burn in the oven when the machine stops suddenly.
- 2.5 Auto chain lubrication system can reduce high levels of friction that can result in chain wear, high energy consumption and unplanned production stops.



OPTIONAL

- Nitrogen
- Central Support
- Customization Max. width
- Dual lane conveyor with independent speed control

Analysis of thermal compensation capacity



Our products are of level 1 performance

3.Powerful cooling zone

- 3.1 Cooling zone is achieved with 2 top and bottom zones (8 zones reflow oven as an example)allowing adjustable convection speed for desired cooling slope.
- 3.2 Except air cooling system, water chiller cooling system is optional.



4.Flux collection system

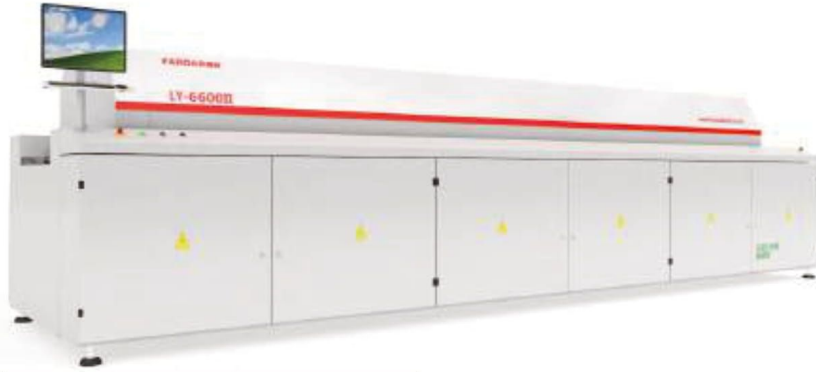
- 4.1 Multi-stage flux filtration collects flux vapors from the reflow zone ensuring the high-efficiency process.
- 4.2 Online maintenance without stopping the machine.
- 4.3 Flux is trapped in a separate collection box with easy to remove plates. As a result, the oven tunnel is kept clean - thus saving the clearance time.
- 4.4 Efficient flux collection system at both front-back end exhausts are installed with quick release metallic filters similar with the heat exchanger for less and easy maintenance. (optional)

5.Machine control system

- 5.1 PC+PLC electricity control system guarantees the stable machine running.
- 5.2 Windows operation system, 2000/XP/win7 is available.
- 5.3 Built-in temperature curve ,temperatures can be recorded directly on the board and displayed on the machine's LCD display.
- 5.4 E-version equipment maintenance manual is available in the machine PC.



PRODUCT PARAMETERS



| | |
|---|---|
| MODEL | LY-6600II |
| General | |
| Dimension(L*W*H) | 3800*1300*1400 |
| Weight | 1300Kg |
| Number Of Heating Zones | Top 6 /Bottom 6 |
| Length Of Heating Zones | 2100MM |
| Heating Method | Micro Circulation |
| Number Of Cooling Zones | 1(Inside) |
| Length Of Cooling Zones | 500MM |
| Cooling Method | Natural Air Cooling |
| Standard Color | Computer white |
| Exhaust Volume | 10M ³ /min x2(channel) |
| Standard Features Of Conveyor System | |
| Conveyor Direction | Left → Right(Option:Right → Left) |
| Conveyor Width | 400MM |
| Range Of Rail Width | 50~400MM |
| Conveyor Height | 900±20MM |
| Conveyor Speed Range | 300~1800mm/min |
| Standard Features Of Control System | |
| Temperature Deviation on PCB | ±2° |
| Temperature Control Precision | ±1° |
| Temperature Setting Range | 60° between the fifth and sixth zones,other zones for 40° |
| Temperature Control Method | Indoor Temperature~350° |
| Power Supply | PID +SSR |
| Power For Warm Up | 36KW |
| Power Consumption | 6KW |
| Power Protection | Overheating warning |



| MODEL | LY-8800II | LY-1000II | LY-8800D | LY-1000D |
|--------------------------------------|---|----------------------|---------------------------------|----------------------|
| The Parameter of Heating Zone | | | | |
| No. of Heating Zones | Top 8/Bottom 8 | Top 10/Bottom 10 | Top 8/Bottom 8 | Top 10/Bottom 10 |
| Length of Heating Zones | 3110 mm | 3892 mm | 3110 mm | 3892 mm |
| No. of Cooling Zones | Up 2 (The interior-circulation of cold air) | | | |
| Exhaust Volume | 10M ³ /minx2 (Channel) | | | |
| The Parameter of Conveyor | | | | |
| Max.Width of PCB | 400 mm (Option:450 mm) | | 250x2 (Single Channel 50~450mm) | |
| Direction of Conveyor | Left → Right (Option: Right → Left) | | | |
| Conveyor Rail Fixed | Front Rail Fixed(option:rear rail fixed) | | | |
| Conveyor Height | 900±20 MM | | | |
| PCB Transmission Agent | Chain+ Mesh (Option:Chain+ Central Support; Single-row chain) | | | |
| PCB Board Height | Top 30 mm/Bottom 25 mm | | | |
| Conveyor Speed | 300~2000 mm/min | | | |
| The Parameter of Control | | | | |
| Power | 3Phase,380V50/60HZ (Option:3,220V50/60Hz) | | | |
| Startup Power | 30KW | 36KW | 32KW | 38KW |
| Power Consumption | 10KW | 11KW | 11KW | 12KW |
| Warming Time | Approx: 30min | | Approx: 35min | |
| Temp-Control Range | Indoor temp -300°C | | | |
| Temp-Control Mode | PID Full-closed loop control, SSR Driving | | | |
| Temp-Control Accuracy | ±1°C | | | |
| PCB Temp-Deviation | ±1.5°C | | | |
| Parameter Storage | Could Store Multiple parameters | | | |
| Abnormal Alarm | Abnormal (Extra-high Temp Or Extra-low Temp After Constant Temp) | | | |
| Signal Tower | Three Lights | | | |
| The Parameter of Machine | | | | |
| Outside Dimension | 5378x1320 x1490mm | 6160x1320 x1490mm | 5378x1539 x1490mm | 6160x1539 x1490mm |
| Weight | Approx: 2300Kg | Approx: 2615Kg | Approx: 2645Kg | Approx: 3050Kg |
| Color | Computer grey (Depend on the assigned color within technological agreement) | | | |
| Commutated Element | Galvanized Plate | | | |
| The Option | | | | |
| Dual-Lane Transmission | Dual Lane with the letter D,1.3 Or 1.4 fixed, Max.width PCB 300x300mm | | | |

Full Automatic Solder Paste Printer



PRODUCT FEATURES

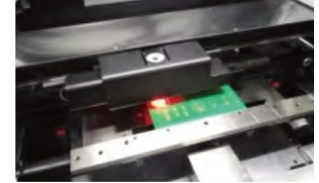
- Graphical English/Chinese interface makes it easy to use.
- Qualified for 2D solder paste inspection and SPC analysis.
- Specialized high-rigidity UVW and modular drive mechanism combined with the inverted triangle adjustment platform of Z axis lifting guarantees the automatic height adjustment of PCB and PIN with different thickness.
- Automatic cleaning system: The device is equipped with high-power blower and Venturi vacuum generator. It can be programmed to use the dry, wet or vacuum cleaning.
- The brand new optical system: uniform ring-light, high-brightness coaxial light source together with the infinite adjustment of the brightness assures the well recognition of various-types Mark points.

PARAMETERS AND HARDWARE

| | |
|---|---|
| Basic Board Size [XY] | Max 450mmx350mm Min 50mmx50mm |
| PCB Thickness | 0.6mm~14mm |
| Warpage | Max.PCB Diagonal line 1% |
| Maximum Board Weight | 10Kg |
| Transfer Speed | 1500mm/s(Max) |
| Transfer Mode | One phase rail |
| Template Frame Size | 370mm x 470mm~737mm x 737mm |
| Maximum Printing Area[X*Y] | 450mmx350mm |
| Squeegee Type | Steel/Glue/(angle45°/55°/60°matching the printing process) |
| Demoulding Length | 0.2mm~12mm |
| Platform Adjustment Range | X,Y:±7.0mm,θ:±2.0° |
| Camera System | Independent camera upwards/downwards imaging vision system,geometric matching location. |
| Repetition Precision Of Image Calibration | ±12.5μm (±0.0005") @6σ,Cp≥2.0 |
| Cycle Time | <7s |
| Power Requirements | AC220V±10%,50/60HZ,15A |
| Machine Dimension | L(1140mm)xW(1400mm)xH(1480mm) |
| Machine Weight | About 1000Kg |

1. Visual system

- Advanced up/down visual system, independent controllable and adjusted lighting, high speed mobile camera lens, precisely alignment for the PCB and template and make sure that the printing accuracy is ±0.025mm.

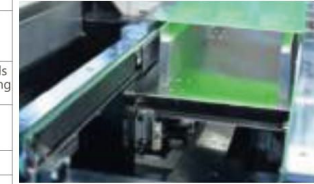


- Four-way light source adjustment, with uniform illumination and the perfect image collection, making the various types of mark points can be a very good identification (including the rugged mark point), to meet the tin, gold-plated, spray tin, FPC, and other types of different colors of the PCB.

2. Multi-functional PCB handling device

- There is a multifunctional device to deal with boards. The device can automatically positioning and pick up various size and thickness PCB boards. It has mobile magnetic thimble, vacuum platform and vacuum chamber, which can avoid board deformation effectively and make sure the even of printing.

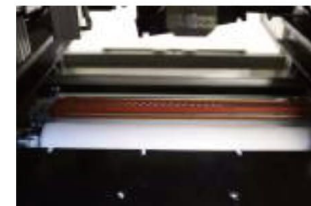
- Simple and reliable PCB positioning system: Adaptive PCB board thickness, software tunable flexible side pressure and magnetic supporting device.



3. Intelligent scraper system

- Suspended printing head which is designed specially in high rigid structure. The scraper pressure, speed and movement are controlled by the computer, which can maintain the even and stability of the printing. Besides, the structure of scraper beam is light and well-formed.

- Sound and light alarm function. It can indicate the reason of the fault.
- Can deal with the PCB base board no matter it is single side or double side.
- Programmable and independent direct-coupled stepper motor control, Built-in precision pressure control system.



4. High-efficiency stencil cleaning system

- The bottom of the board can be cleaned by manual or automatically. The clean function for the bottom of board is automatic and no need any assists. It can be programmed to control the dry, wet or vacuum cleaning. The cleaning time interval can be free to set. It can clean all the solder paste inside the board holes and guarantee the high quality printing.

- The new wiping system ensures full contact with the stencil, and the increased vacuum suction ensures that the solder paste remaining in the mesh is effectively removed, and the effective automatic cleaning function is achieved.

SEMI-AUTO SOLDER PASTE PRINTER



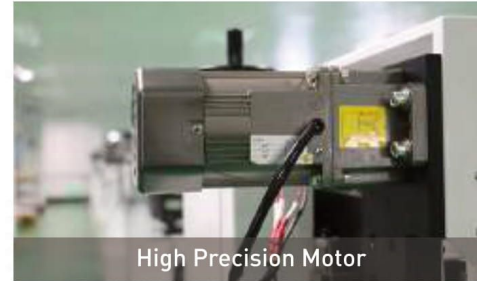
LY-30120
Semi-auto Solder Paste Printer

LY-3070
Semi-auto Solder Paste Printer

LY-3050
Semi-auto Solder Paste Printer

PRODUCT FEATURES

- The entire machine is under the control of PLC and employs a touch screen that is embedded an interactive interface, and is armed with a Ivory inverter as well as Panasonic motor to manage the movement, which offers a stable performance and simple operation.
- The first company in the world uses the unique method which their printing table declines from top to bottom during the demold process, presenting the same performance as imported full-auto screen printer.
- Dramatically emphasize the stability of device and its printing accuracy by employing 4 imported rails.
- Adopting the creative switch with dual security buttons to ensure the operator safety.



High Precision Motor



Intelligent Scraper System

- Printing the solder paste to the pad of individual components with low-cost and proven processes will lay a foundation for an electrically functional product in just a few steps.
- The semi-automatic stencil printer can suitable to the largest of the range. It can handle oversized PCBs such as 1.2M and 1.5M in length.

PARAMETER SPECIFICATION

| Model Parameter | LY-3050 | LY-3070 | LY-30120 |
|----------------------|------------------------------------|----------------------|----------------------|
| Print-table Area | 320*500mm(W-L) | 320*700mm(W-L) | 320*1250mm(W-L) |
| Board Size | max 300*500mm | max 300*700mm | max 320*1250mm |
| Board Thickness | 0.2~5.0mm | | |
| Print-Position fixed | exterior/reference pin | | |
| Platen Adjustment | before/after±10mm left/right ±10mm | | |
| Print Accuracy | ±0.02mm | | |
| Repeat Accuracy | ±0.02mm | | |
| Air pressure | 0.4~0.6Mpa | | |
| Power | 1ΦAC 220V 50/60HZ | | |
| Shape Dimension | 900*900*1650(L*W*H) | 1150*900*1650(L*W*H) | 2010*900*1650(L*W*H) |

LOADER UNLOADER

PARAMETERS AND HARDWARE

- Total 50 pieces PCB capacity.
- Selectable pitch settings.
- Regulated pressure on pneumatic pusher.



- Embedded LED touch screen for easier operation.
- Electrical and automatic conveyor width adjustment.
- Equipped with towerlight to show the machine running status.



Loader

Unloader

PRODUCT FEATURES

- Specialized aluminium guide rail and plastic roller chain
- Taiwan-made 90w step motor driver adopts the ball screw to control the rise and down of magazines.
- Automatic magazine change-over.
- Pneumatic clamping structure.
- Mitsubishi PLC programmable.
- With one set of 0.7m conveyor belt.
- User-friendly "soft touch" LED membrane control panel.

This loader is manufactured by high-quality, CE-approved components from our global suppliers such as Omron and Panasonic, which has the same high reliability and advanced features as those made by better-known manufacturers, but with less cost.

PARAMETER SPECIFICATION

| Model Parameter | Loader | Unloader |
|---------------------|-----------------------|-----------------------|
| Transport Direction | L-R/R-L | |
| Pitch Distance | 10,20,30,40mm | |
| Magazine Size | L355*W320*H565mm | |
| Max PCB Size | L330*W250 | |
| Transport Height | H=920±30 | |
| Magazine Capacity | 50PCS | |
| Power | 220V 50HZ | |
| Air Source | 0.4-0.6Mpa | |
| Machine Dimension | L1100*W780*H1200±30mm | L1700*W780*H1200±30mm |

BUFFER CONVEYOR



Standard SMEMA interface



Electric Adjustment

PRODUCT FEATURES

- Controlled by Chip board
- Manual conveyor width adjustment, electrical adjustment is optional. from 0mm 400mm
- Imported power system for speed-regulation dual motors
- Can connect with various SMT machines
- Standard length is 500mm, 1000mm and 1200mm, customized length is available.
- Transmission Direction: Left → Right or Right → Left
- Fixed edges can be changed



WORKSHOP DISPLAY >

